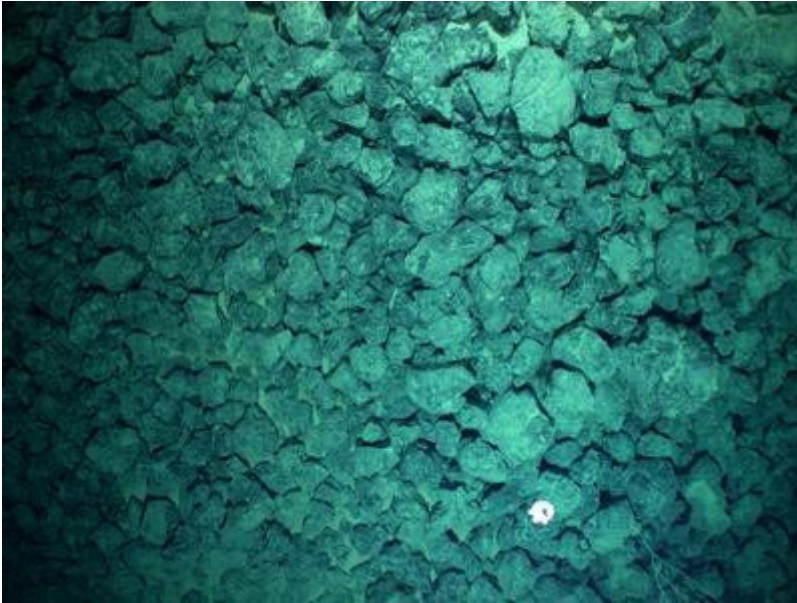
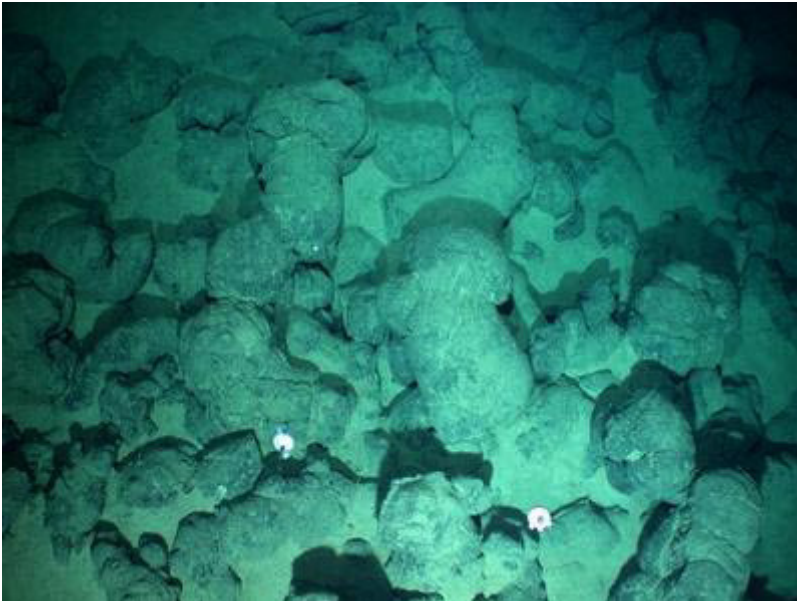


9.14 Example Images

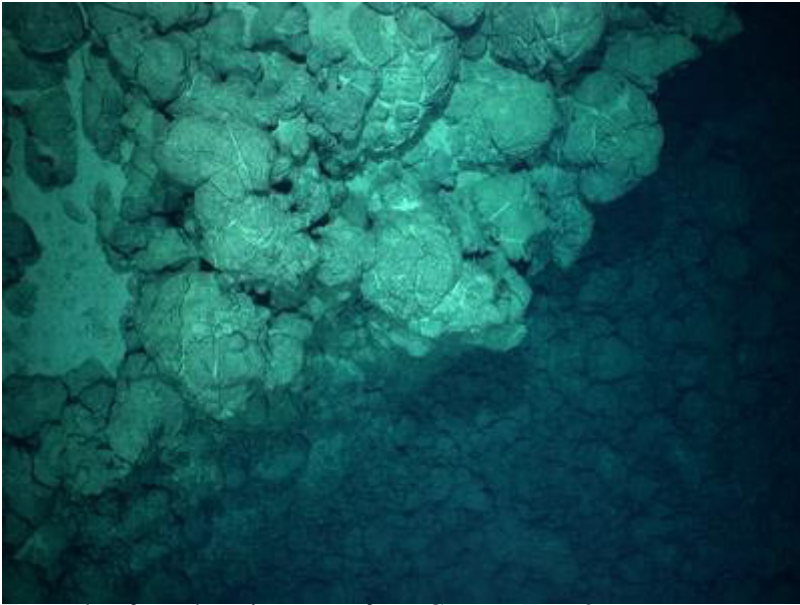
Approx scale for photos is 4x6m



Example of rubble from Camera Tow 13



Example of pillow basalts on a small mound from Camera Tow 13

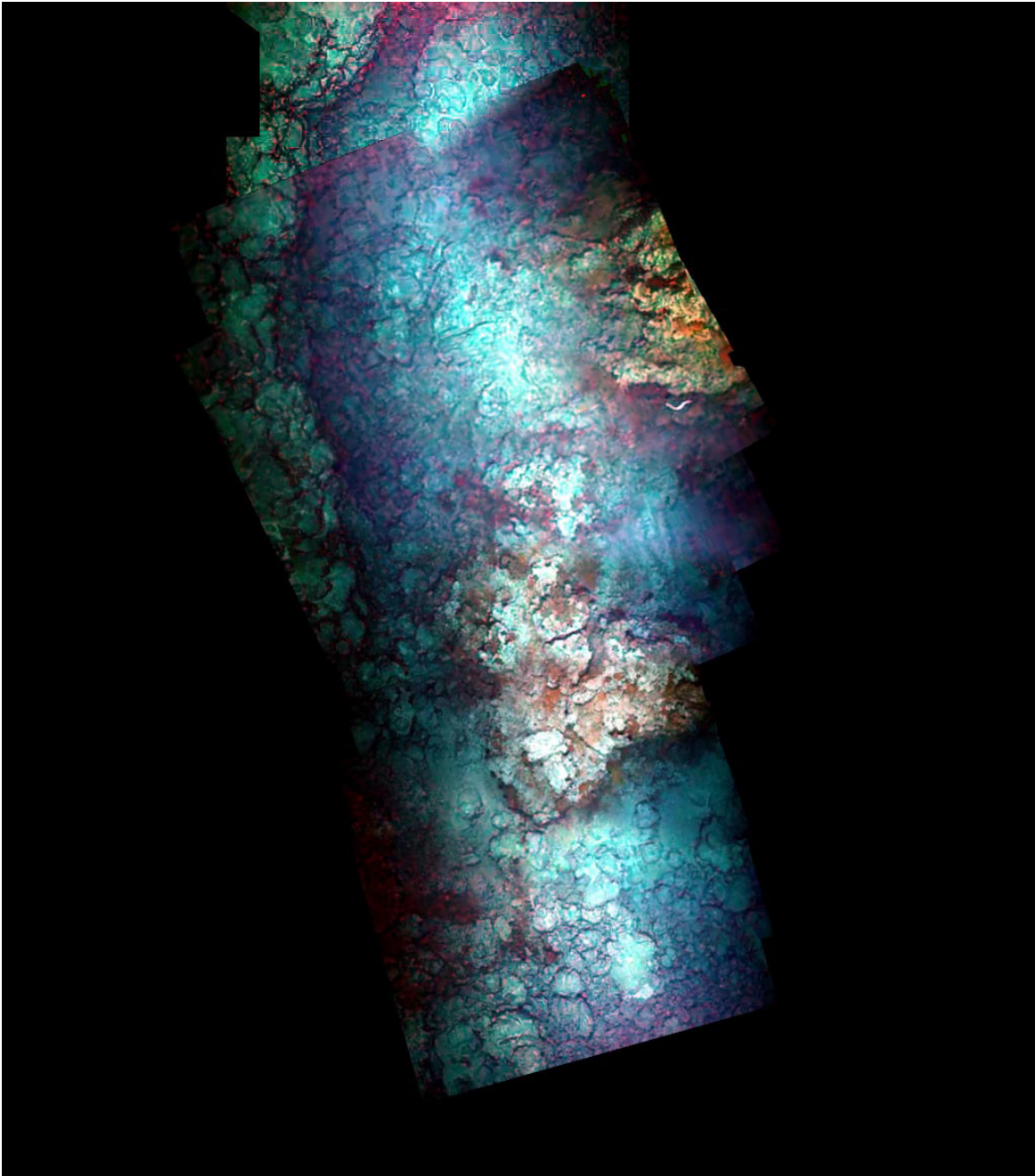


Example of overhanging scarp from Camera Tow 2

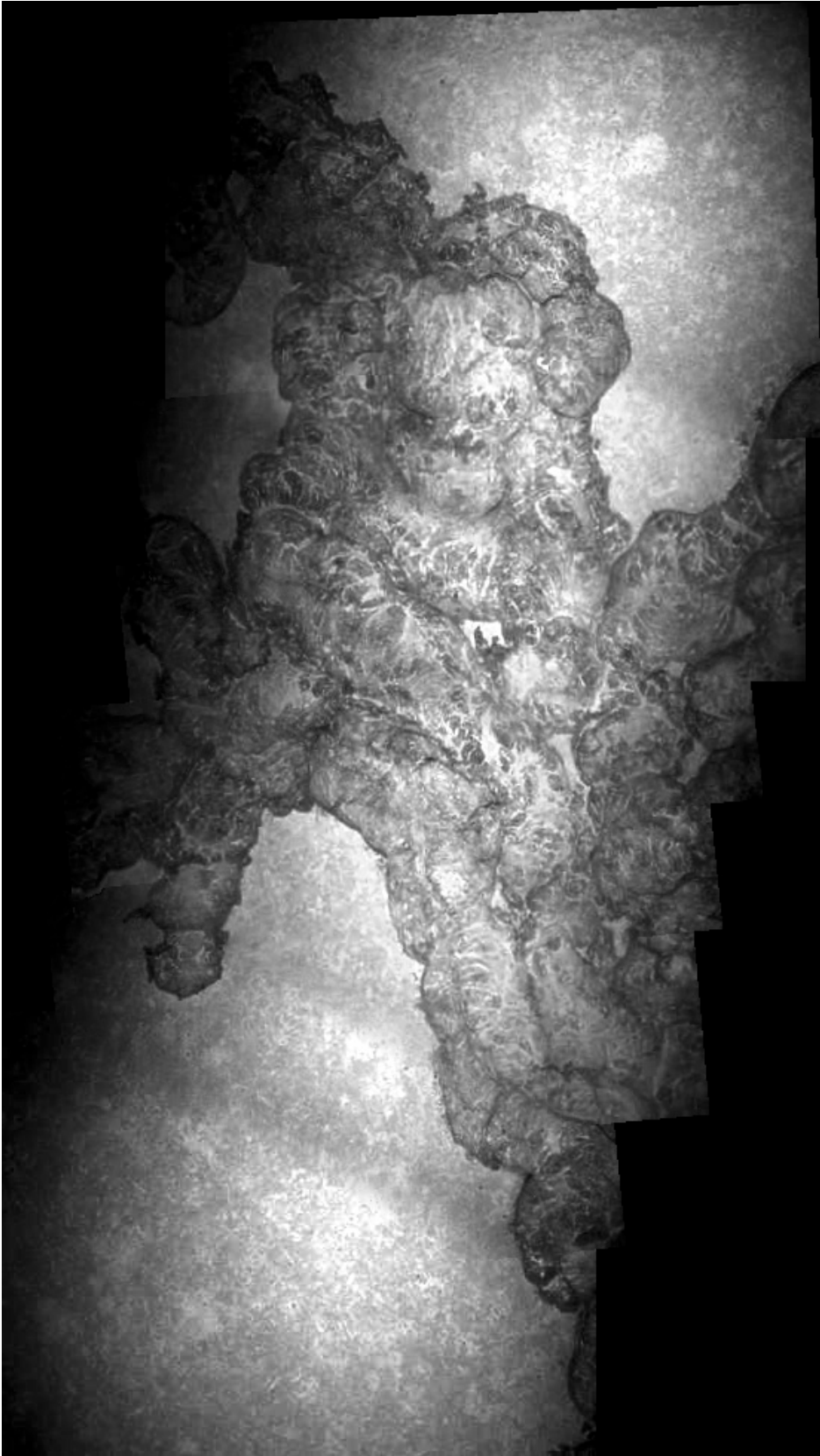


Example of an extinct sulfide chimney from Camera Tow 2

9.15 Photo Mosaics



Camera Tow 2: (2002_08_16_19_14---16) Hydrothermal alteration due to hydrothermal venting



Camera Tow 3: (2002_08_17_20_09---11) New flow observed over sedimented seafloor



Camera Tow 6: (2002_08_19_16_24---26) Seafloor fissure

