

## MORE THAN A DEGREE, A PURPOSE

**ENVIRONMENTAL** MANAGEMENT (MEM) DEGREE

**MASTER OF FORESTRY** (MF) DEGREE

### STATE-OF-THE-ART RESOURCES + FACILITIES



GRAINGER HALL + LSRC  
DURHAM, NC



DUKE FOREST  
DURHAM, NC



DUKE MARINE LAB  
BEAUFORT, NC

### STUDENT OPPORTUNITIES

#### CERTIFICATE PROGRAMS

- Geospatial Analysis
- Environmental Innovation and Entrepreneurship
- Community-based Environmental Management
- International Development Policy
- Climate Change Science and Applications

#### MULTIDISCIPLINARY CENTERS

- Bass Connections
- Information Initiative at Duke (iID)
- Duke River Center
- Duke University Wetland Center
- Superfund Research Center
- Duke University Energy Initiative
- The Nicholas Institute for Environmental Policy Solutions
- Global Health Institute

#### APPLICATION DEADLINES

**DEC. 15**  
PRIORITY DEADLINE

**JAN. 15**  
REGULAR DEADLINE

**FEB. 15**  
NEED-BASED AID DEADLINE

Duke Environment brings together bright, talented and ambitious people from across the globe whose interests vary from conservation to corporate sustainability and everything in between. With seven on-campus MEM concentrations to choose from, plus opportunities to earn your MEM or SAF-accredited MF degree concurrently with a master's degree in business, law, public policy, engineering or education, you will have the ideal exploratory platform for pursuing an impactful and rewarding career. Our students graduate as leaders—capable of affecting change, spurring innovation and inspiring others to action.

#### NEW FUNDING OPPORTUNITY FOR COLOMBIAN CITIZENS

In partnership with The Fundación para el Futuro de Colombia (COLFUTURO), we are excited to offer a new funding opportunity for qualified Colombian students to attend Duke's Nicholas School.

The Nicholas School provides a tuition scholarship minimum of \$6,000 USD per eligible admitted residential MEM or MF student per year (for up to two years, four semesters).

COLFUTURO will provide the remainder of the tuition fees, living expenses and other eligible related costs up to \$25,000 USD per year for a maximum financing of two years, up to \$50,000 USD.

**7**  
CONCENTRATION AREAS

- Business and Environment
- Coastal Environmental Management
- Energy and Environment
- Ecotoxicology and Environmental Health
- Environmental Economics and Policy
- Ecosystem Science and Conservation
- Water Resources Management

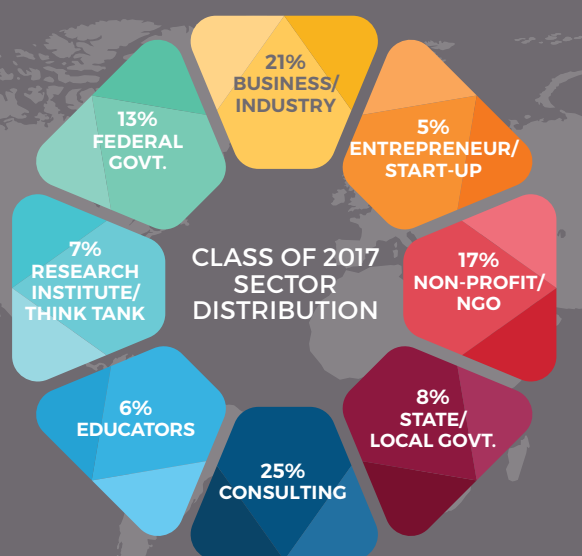
**19**  
AVERAGE CLASS SIZE

**72%** US CITIZENS  
**28%** INTERNATIONAL STUDENT PROFILE

**APPLY FOR ADMISSION @ [NICHOLAS.DUKE.EDU/ADMISSIONS](http://NICHOLAS.DUKE.EDU/ADMISSIONS)**  
**LEARN MORE ABOUT COLFUTURO PROGRAM @ [WWW.COLFUTURO.ORG](http://WWW.COLFUTURO.ORG)**

### OUR ALUMNI

NICHOLAS SCHOOL GRADUATES LEAD THE CHARGE TO MAKE A DIFFERENCE. THEY ARE EMPLOYED AROUND THE WORLD AND ACROSS ALL SECTORS.



### CAREER AND PROFESSIONAL DEVELOPMENT

To help maximize your career readiness, our professional staff:

- assists you in developing your personal career strategy;
- helps you refine and communicate your existing skills and learn new ones;
- provides career experiences, tools and resources; and
- helps you make connections with professionals and alumni in your field.

### ALUMNI PROFILE

TEMIS CORAL MEM'19



**Master of Environmental Management Candidate  
Business and Environment**

"The environmental challenges observed around the globe require us, as future leaders, to work passionately to find novel solutions integrating science, economic and policy analysis. This is exactly what I have found as a Master of Environmental Management student at the Nicholas School; an interdisciplinary approach to environmental issues instructed by world-class Faculty. All this, while enjoying an amazing time with the Nicholas School community and the Duke University family."

### CONTACT DUKE ENVIRONMENT

T: 919-613-8070 [ADMISSIONS@NICHOLAS.DUKE.EDU](mailto:ADMISSIONS@NICHOLAS.DUKE.EDU)

[facebook.com/DukeEnvironment](https://www.facebook.com/DukeEnvironment) [twitter.com/dukeenvironment](https://twitter.com/dukeenvironment) [@DukeEnvironment](https://www.instagram.com/DukeEnvironment)

[nicholas.duke.edu](http://nicholas.duke.edu)