

DUKE UNIVERSITY

NICHOLAS SCHOOL OF THE ENVIRONMENT

INSPIRING ENVIRONMENTAL LEADERSHIP

ENVIRONMENTAL MANAGEMENT (MEM) DEGREE

MASTER OF FORESTRY (MF) DEGREE

DUKE ENVIRONMENTAL LEADERSHIP (ONLINE MEM) DEGREE

Duke University's professional master's programs combine academics with an emphasis on practical, skills-based instruction in environmental management, science and policy to train a **new breed of environmental leader**.

With eight concentrations to choose from, plus opportunities to earn a professional **MEM** or **SAF-accredited MF degree** concurrently with a master's degree in business, law, public policy, engineering or education, you can tailor an individualized program that prepares you for leadership in the corporate, nonprofit, government or consulting sector.

STATE-OF-THE-ART RESOURCES + FACILITIES



ENVIRONMENT HALL + LSRC
DURHAM, NC



DUKE FOREST
DURHAM, NC



DUKE MARINE LAB
BEAUFORT, NC

If you are a practicing environmental professional with at least five years of experience, there is the two-year **Duke Environmental Leadership online MEM degree** program. It allows working professionals from all disciplines to pursue a MEM degree in environmental leadership while continuing to work.

74%
US CITIZENS

26%
INTERNATIONAL
STUDENT MAKEUP

19
AVERAGE
CLASS SIZE

2
MASTERS DEGREES
MEM + MF

8
CONCENTRATION
AREAS

Business and Environment
Coastal Environmental Management
Energy and Environment
Ecotoxicology and Environmental Health
Environmental Economics and Policy
Ecosystem Science and Conservation
Global Environmental Change
Water Resources Management

ALUMNI

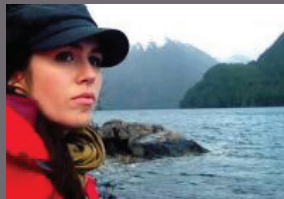
CHANTALLE
CLARKE-SAMUELS
MEM'09



Chief Executive Officer at
Coastal Zone Management
Authority and Institute

"The education and career training I received at the Nicholas School of the Environment is second to none. I received a world-class education that thoroughly prepared me to further advance my career in the dynamic field of coastal and marine management."

ERIN FULTON
MEM/MF'12



Program Manager,
Alaska Sustainable
Fisheries Trust

"The curriculum allows students to approach environmental science and the current issues surrounding the environment from myriad angles - be it economics, policy, empirical science, etc. Encouraging this broader vision has been very beneficial to my work here in Southeast Alaska."

BRIAN HOLLY
DEL-MEM'11



Vice President and Senior
Ecologist, BioResource
Consultants, Inc.

"The Nicholas School helped me advance to the next level in my career because I gained a greater understanding of environmental issues, became a more effective leader, and was exposed to an extensive network of environmental professionals."

YOU WILL
GRADUATE
WITH



The skills & knowledge to
LEAD solutions



A strategically
focused toolkit

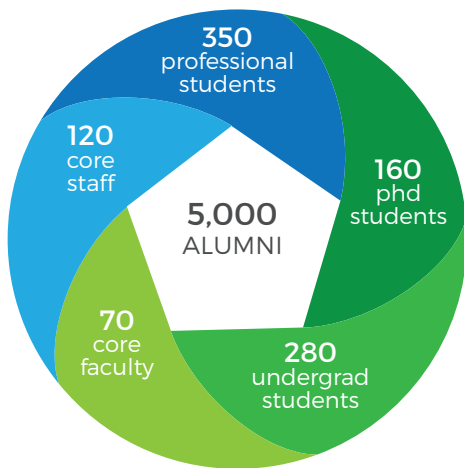


The ability to work
collaboratively
in teams



A multi-faceted lens
to address today's
environmental
complexities

OUR COMMUNITY



OUR FACULTY

INNOVATIVE COURSES TAUGHT BY WORLD-RENOWNED FACULTY

Our faculty are world leaders in the physical, life and social sciences who value teaching as highly as research. Using **emerging technologies, hands-on research** and **one-on-one interaction**, they strive to impart the skills and knowledge you need to succeed.

FINANCIAL AID

The Nicholas School makes every effort to make your education affordable. Several million dollars per year from our annual and endowment funds support our professional students.

>80%

STUDENTS RECEIVE NEED-BASED AND/OR MERIT-BASED NIC SCHOOL AID

APPLICATION DEADLINES

DEC. 15
MERIT-BASED AID
PRIORITY DEADLINE

JAN. 15
REGULAR DEADLINE

FEB. 16
NEED-BASED AID DEADLINE

STUDENT OPPORTUNITIES

CERTIFICATE PROGRAMS

Geospatial Analysis
Environmental Innovation and Entrepreneurship
Community-based Environmental Management
International Development Policy

MULTIDISCIPLINARY CENTERS

Center on Global Change
Center for Tropical Conservation
Duke River Center
Duke University Wetland Center
Superfund Research Center
Duke University Energy Initiative
The Nicholas Institute for Environmental Policy Solutions
Global Health Institute

120

INTERNSHIPS IN 2017

1938

FOUNDING YEAR

11

CONCURRENT DEGREE POSSIBILITIES

9+

PROFESSIONAL GROUPS

Business and Environment Club
Duke Water Network
Eno Literary Magazine
Green Roof and Orchard Workforce
Nicholas School Energy Club
Nicholas School Student Council
Ocean Policy Working Group
SNAP Visual Communications
Student Association for Geospatial Analysis

CAREER AND PROFESSIONAL DEVELOPMENT

To help maximize your career readiness, our professional staff pledges to:

- assist you in developing your personal **career strategy**;
- help you **refine and communicate** your existing skills and learn new ones for career success;
- provide a variety of career **experiences, tools and resources**; and
- help you make **connections** with professionals and alumni in your field.

CONTACT DUKE ENVIRONMENT

T: 919-613-8070 ADMISSIONS@NICHOLAS.DUKE.EDU

facebook.com/DukeEnvironment

twitter.com/dukeenvironment

nicholas.duke.edu

@DukeEnvironment

OUR ALUMNI

NICHOLAS SCHOOL GRADUATES LEAD THE CHARGE TO MAKE A DIFFERENCE. THEY ARE EMPLOYED AROUND THE WORLD AND ACROSS ALL SECTORS.

